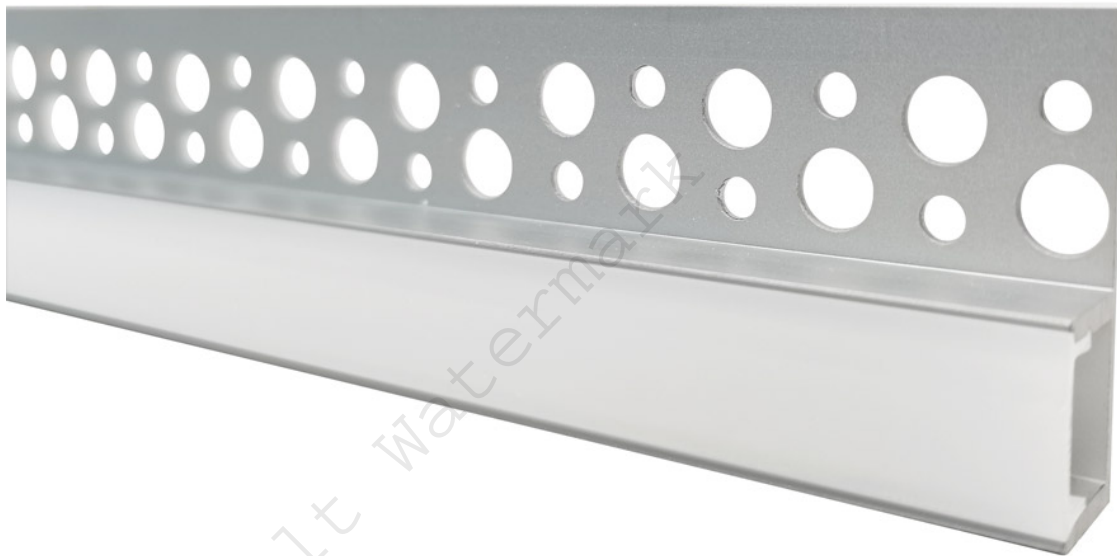


PROFILE ALUMINIUM RECESSED 2M FROSTED DIFFUSER INCLUDE 2 ENDCAPS



Description

This profile is designed to be plastered into interior walls and ceilings. It is ideal for lighting applications including illuminating kitchens, bathrooms, toilets, changing rooms and similar rooms which have ceramic tiling.

The profile can also be used on plastered walls and ceilings to create linear lighting effects. The L shape trim of the profile makes it easy to fit the profile into plaster and concrete materials, with a seamless finish.

